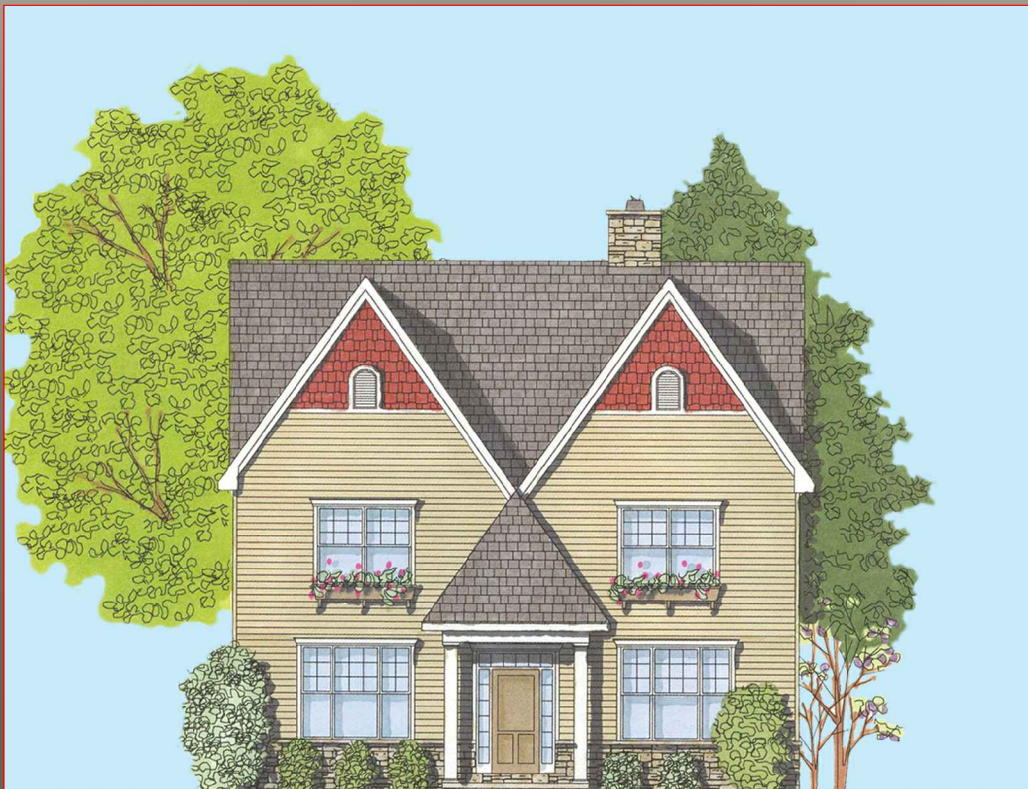




### *Model Features:*

2 car garage, 4 bedroom, 2 1/2 bath  
3,040 base square footage

- Traditional Center Entry Homes
- Private Front Study w/ French Doors
- Large Central Kitchen w/ Seating Island
- Twin Art Niches off of the Foyer
- Spacious Family Room w/ Fireplace & Built-in Desk
- Large Mud Room w/ Built-in Locker Cubbies
- Split Hall Bath w/ Twin Vanity & Private 3rd Bath
- Large Owner's Suite w/ Private Bath and His & Her's Large Walk-in-Closets



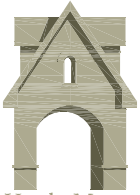
# *The Cameron*

## ◇ Haydn Manor ◇



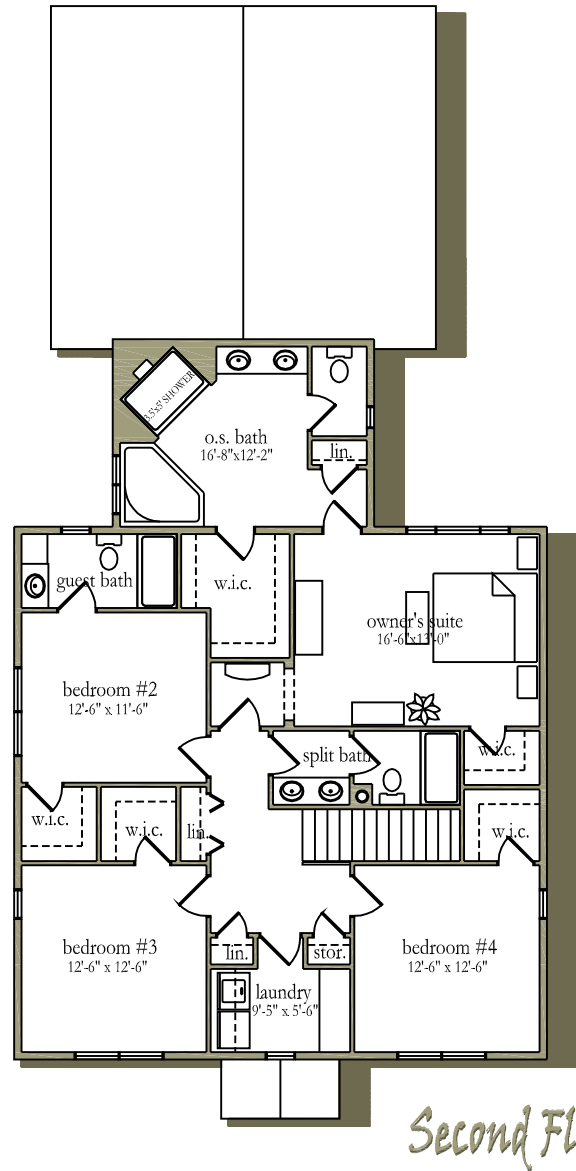
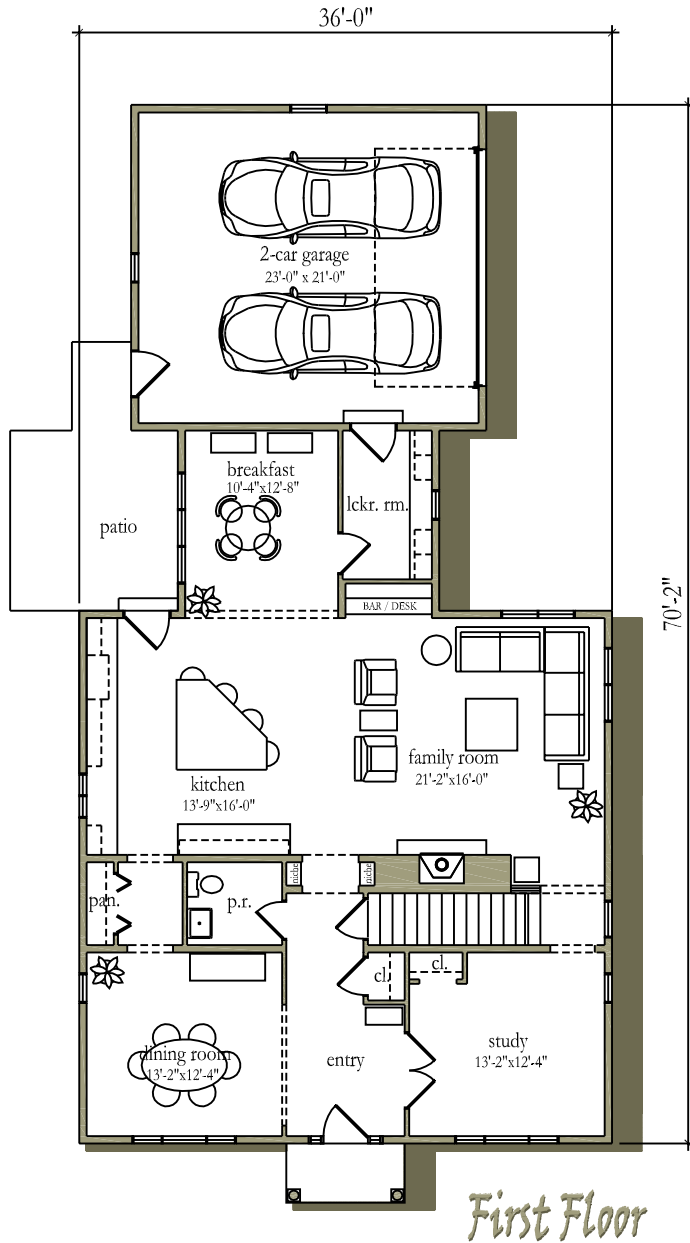
HOGAN  
& HERR  
717•293•1009

Located in the East Hempfield School District



Haydn Manor

# The Cameron



### Interior Amenities

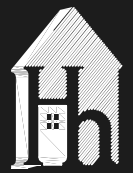
- 9' First Floor Ceilings and 8' Second Floor Ceilings
- 36" Gas Fireplace w/ Tile Surround and Custom Paint-grade Mantle (multiple designs)
- Staircase with Clear-coated Oak Treads & Handrails Painted Risers, Newel Post and Balusters
- Site Finished Oak Hardwood in the Foyer, Powder Rm., Dining Rm., Kitchen and Breakfast Area (per plan)
- Plush Carpet in Study, Family Room & Bedrooms
- Vinyl Flooring in Mudroom/Laundry & Bath Floors
- Oversized 2-car Garages w/ Storage Bay (select plans)
- Recessed lighting & A Decorative Lighting Allowance

### Exterior Amenities

- Public water and sewer
- Public roads and sidewalks
- 8' high, Poured Concrete Foundation
- 30 year roof shingles with limited lifetime transferable warranty (gray or black)
- 4" Vinyl Siding and Masonry on Exterior
- Fiberglass Front Entry Door (Several Styles)

### Kitchen & Bath Amenities

- Raised Panel Maple Cabinetry w/ 42" Wall Cabinets with Crown Molding and Level 1 Granite Counters
- Undermount sink with garbage disposal
- Generous Appliance Allowance
- Ceramic Tile Top and Surround at Soaking Tub in Master Bath Along w/ Oversized Shower Stall
- Moen and Delta plumbing fixtures
- Cultured marble vanity tops/sinks



**HOGAN & HERR**  
717 • 560 • 6540