



### *Model Features:*

2 car garage, 3 bedroom, 2 1/2 bath  
2,470 base square footage

- Cottage Styled Front Facade
- 1st Floor Study w/ Triple Window
- Oversized 2-Car Garage
- Open Floor Plan w/ Columns & Soffits
- Split Hall Bath w/ Twin Vanity
- Owners Suite w/ Private Bath and Large Walk-in-Closet

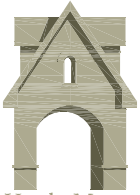


# *The Hancock*

◇ Haydn Manor ◇

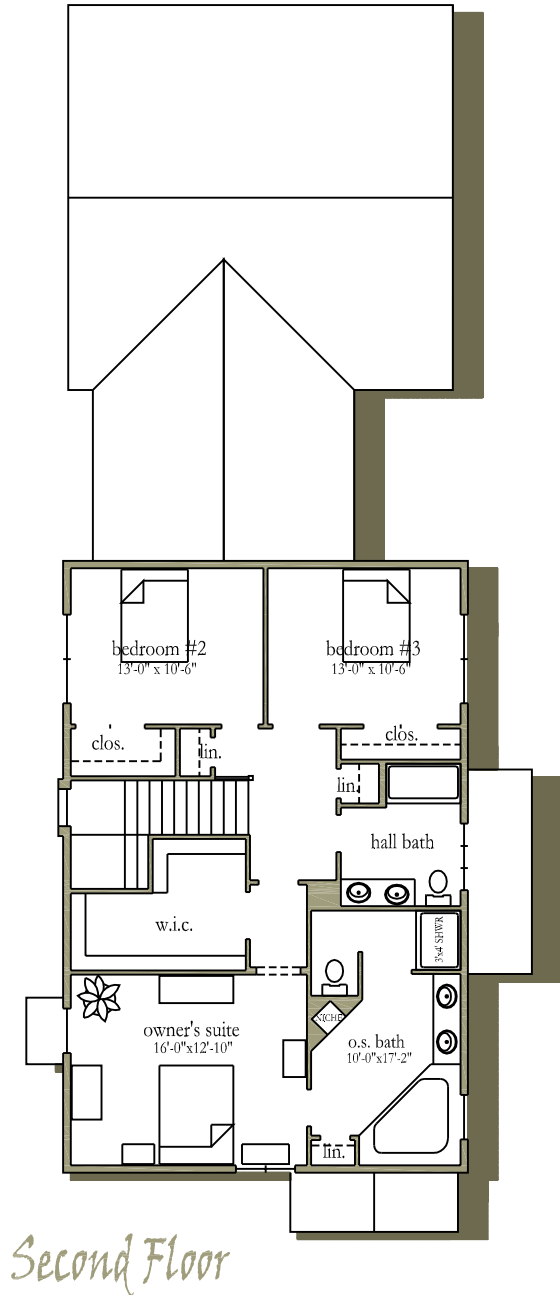
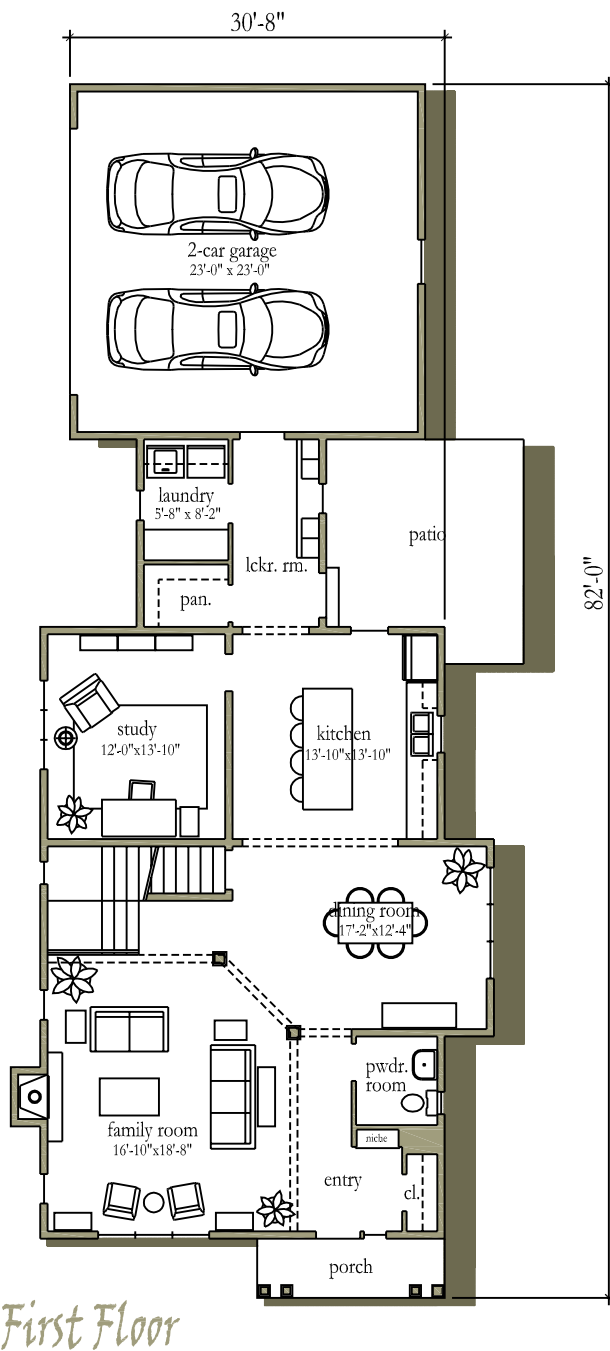


Located in the East Hempfield School District



Haydn Manor

# The Hancock



### Interior Amenities

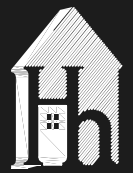
- 9' First Floor Ceilings and 8' Second Floor Ceilings
- 36" Gas Fireplace w/ Tile Surround and Custom Paint-grade Mantle (multiple designs)
- Staircase with Clear-coated Oak Treads & Handrails Painted Risers, Newel Post and Balusters
- Site Finished Oak Hardwood in the Foyer, Powder Rm. Dining Rm., Kitchen and Breakfast Area (per plan)
- Plush Carpet in Study, Family Room & Bedrooms
- Vinyl Flooring in Mudroom/Laundry & Bath Floors
- Oversized 2-car Garages w/ Storage Bay (select plans)
- Recessed lighting & A Decorative Lighting Allowance

### Exterior Amenities

- Public water and sewer
- Public roads and sidewalks
- 8' high, Poured Concrete Foundation
- 30 year roof shingles with limited lifetime transferable warranty (gray or black)
- 4" Vinyl Siding and Masonry on Exterior
- Fiberglass Front Entry Door (Several Styles)

### Kitchen & Bath Amenities

- Raised Panel Maple Cabinetry w/ 42" Wall Cabinets with Crown Molding and Level 1 Granite Counters
- Undermount sink with garbage disposal
- Generous Appliance Allowance
- Ceramic Tile Top and Surround at Soaking Tub in Master Bath Along w/ Oversized Shower Stall
- Moen and Delta plumbing fixtures
- Cultured marble vanity tops/sinks



HOGAN  
& HERR  
717 • 560 • 6540