



### *Model Features:*

2 car garage, 3 bedroom, 2 1/2 bath  
2,305 base square footage

- Large Covered Front Porch
- Built-in Display Shelving at Entry
- 2-Car Front Load Garage
- Large Family Room w/ Corner Fireplace and Vaulted Ceiling
- Open Floor Plan w/ Columns & Soffits
- 1st Floor Owners Suite w/ His & Her's Walk-in Closets
- 2nd Floor Loft w/ Two Bedrooms & Split Hall Bath
- Large Owner's Suite w/ Tub & Shower



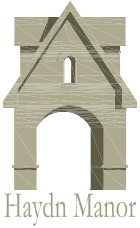
# *The Waverly*

## ◇ Haydn Manor ◇



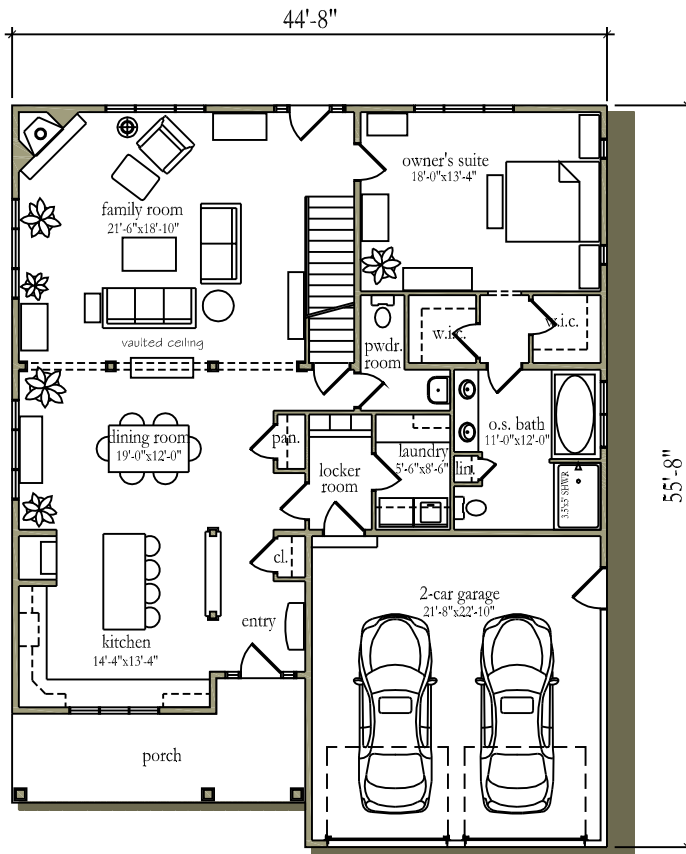
HOGAN  
& HERR  
717•293•1009

Located in the East Hempfield School District

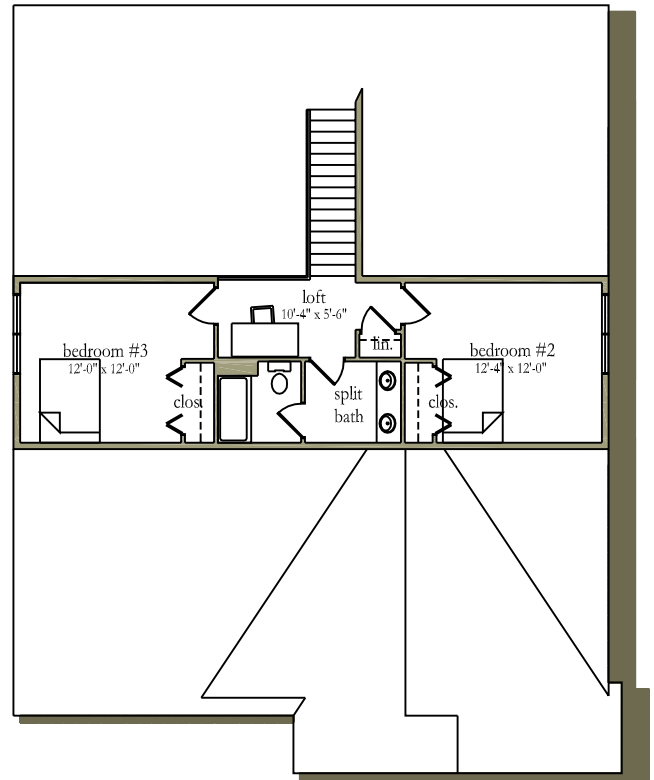


# The Waverly

Haydn Manor



First Floor



Second Floor

### Interior Amenities

- 9' First Floor Ceilings and 8' Second Floor Ceilings
- 36" Gas Fireplace w/ Tile Surround and Custom Paint-grade Mantle (multiple designs)
- Staircase with Clear-coated Oak Treads & Handrails Painted Risers, Newel Post and Balusters
- Site Finished Oak Hardwood in the Foyer, Powder Rm. Dining Rm., Kitchen and Breakfast Area (per plan)
- Plush Carpet in Study, Family Room & Bedrooms
- Vinyl Flooring in Mudroom/Laundry & Bath Floors
- Oversized 2-car Garages w/ Storage Bay (select plans)
- Recessed lighting & A Decorative Lighting Allowance

### Exterior Amenities

- Public water and sewer
- Public roads and sidewalks
- 8' high, Poured Concrete Foundation
- 30 year roof shingles with limited lifetime transferable warranty (gray or black)
- 4" Vinyl Siding and Masonry on Exterior
- Fiberglass Front Entry Door (Several Styles)

### Kitchen & Bath Amenities

- Raised Panel Maple Cabinetry w/ 42" Wall Cabinets with Crown Molding and Level 1 Granite Counters
- Undermount sink with garbage disposal
- Generous Appliance Allowance
- Ceramic Tile Top and Surround at Soaking Tub in Master Bath Along w/ Oversized Shower Stall
- Moen and Delta plumbing fixtures
- Cultured marble vanity tops/sinks



HOGAN & HERR  
717 • 560 • 6540